

# 2018 JULY POINT-IN-TIME DANE COC

---

SARAH LIM, PIT COMMITTEE

# WHAT IS POINT IN TIME (PIT)?

---

- A snapshot of people experiencing homelessness on a given night
  - Sheltered Count
  - Unsheltered Count

# OTHER WAYS TO UNDERSTAND THE EXTENT OF HOMELESSNESS

---

- Coordinated Entry Housing Priority List
- Annual Homeless Assessment Report (AHAR)
- Number of Homeless Students –School Districts

# 2018 JULY PIT

---

- On the night of July 25, 2018
- Mild weather: high 84, low 59, around 70 degrees during the unsheltered count
- 10 teams/43 volunteers on the PIT night
- 3 teams/6 volunteers the next day at The Beacon, Bethel, and remote camp sites

# 2018 JULY PIT SUMMARY FINDINGS

---

**640+** total persons experiencing homelessness

**187** persons (54 families) in households with children

**450** persons in households without children

**3** unaccompanied youth age under 18

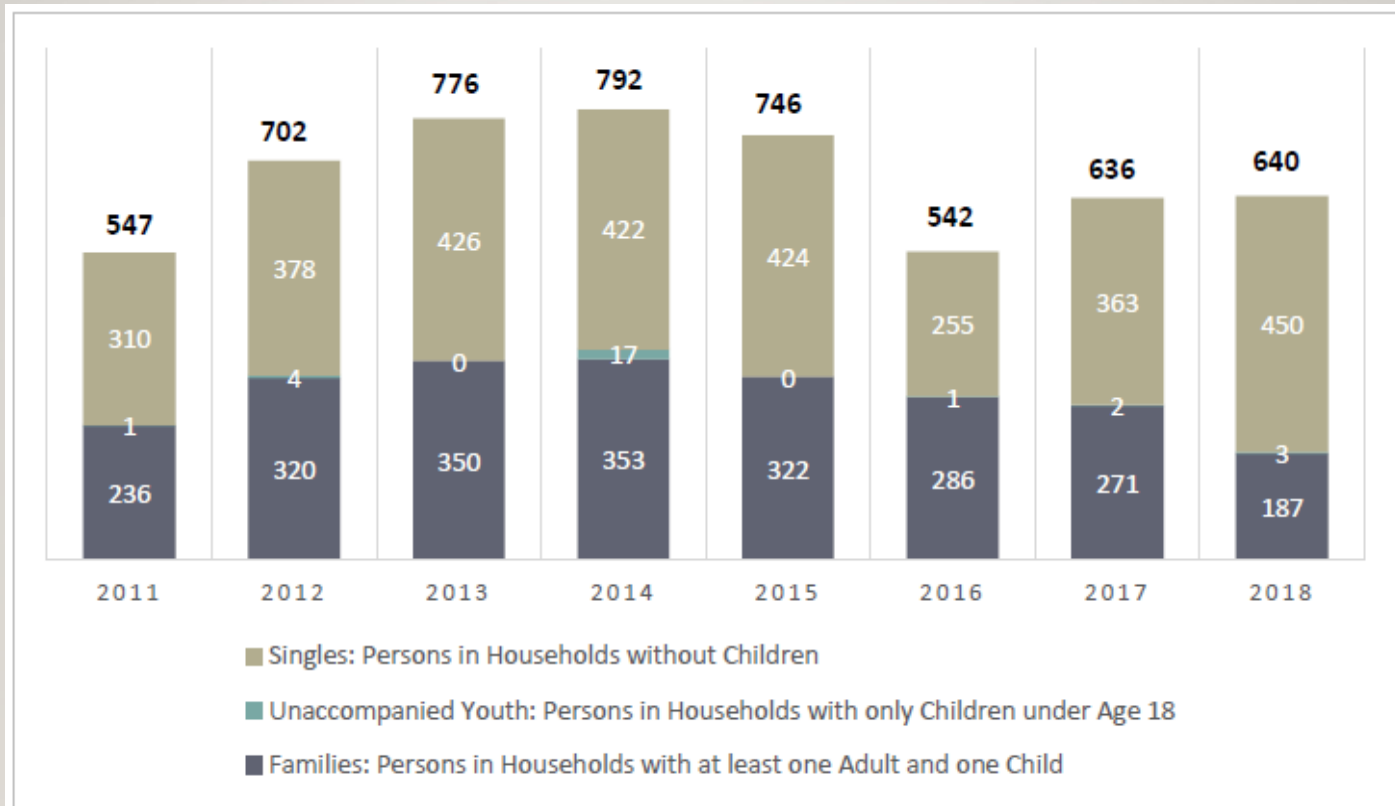
# COMPARE TO 2017 JULY PIT

---

- Increase overall of 0.6% or 4 persons
- Decrease for families of 31% or 84 persons
- Increase for singles of 24% or 87 persons
- Decrease for chronically homeless of 10% or 13 persons
- Increase for veterans of 29% or 11 persons

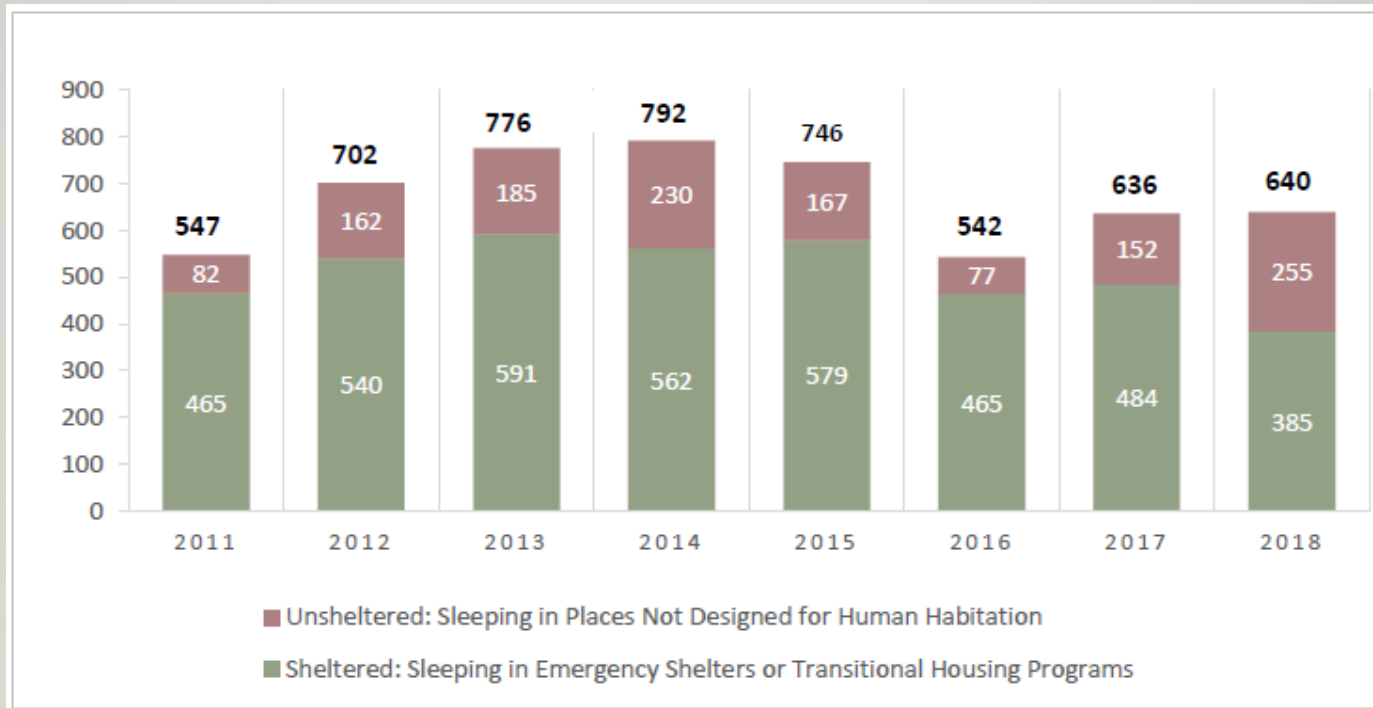
# JULY PIT: 2011-2018

## BY HOUSEHOLD TYPE



# JULY PIT: 2011-2018

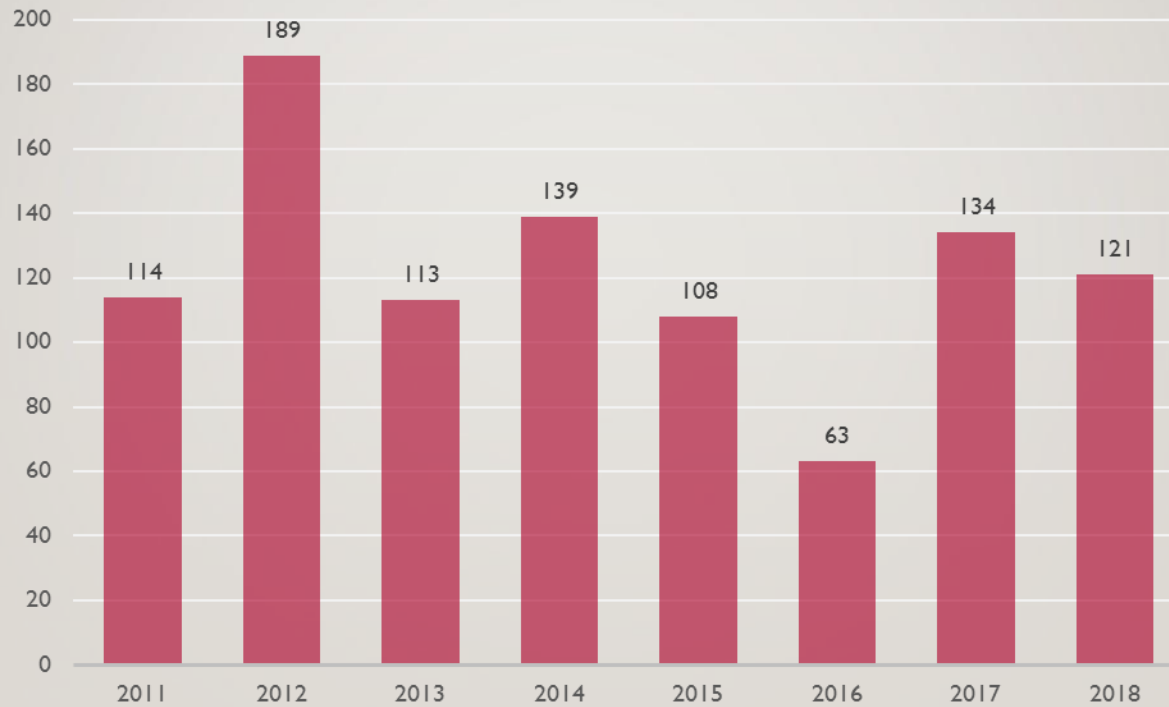
## BY SLEEPING SITUATION





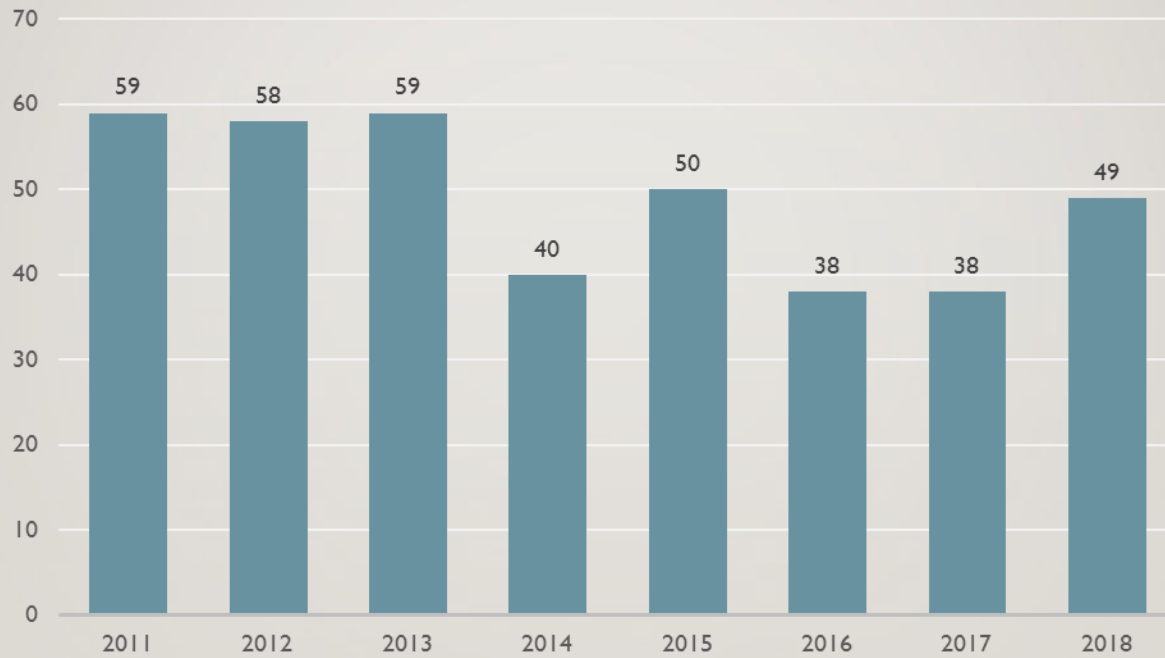
# CHRONICALLY HOMELESS

---



# VETERANS

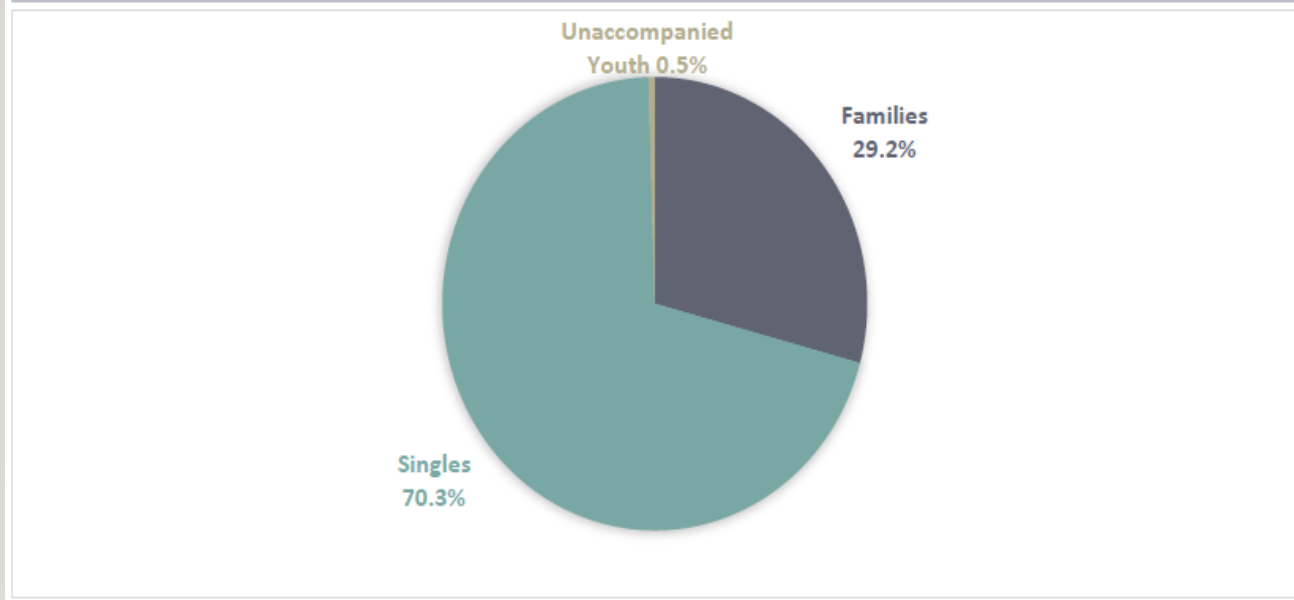
---



# 2018 JULY PIT: AT A GLANCE

## BY HOUSEHOLD TYPE

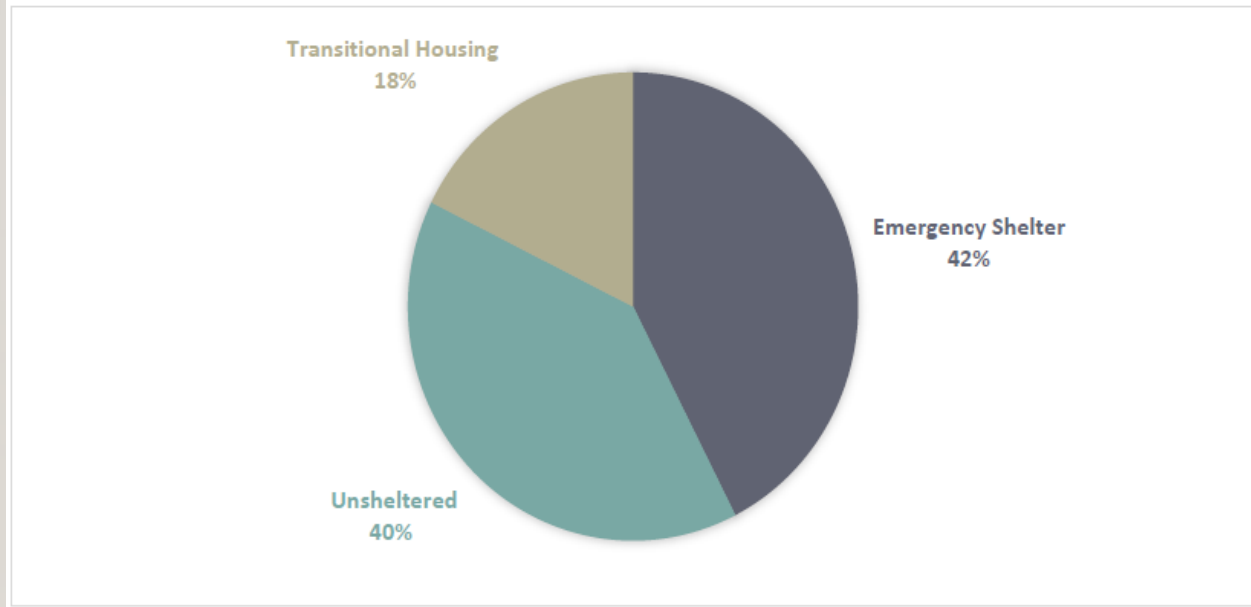
Household Types	Number	Percentage
Families: Persons in Households with at least one Adult and one Child	187	29.2%
Singles: Households without Children	450	70.3%
Unaccompanied Youth: Households with only Children	3	0.5%
<b>Total</b>	<b>640</b>	<b>100%</b>



# 2018 JULY PIT: AT A GLANCE

## BY SLEEPING SITUATION

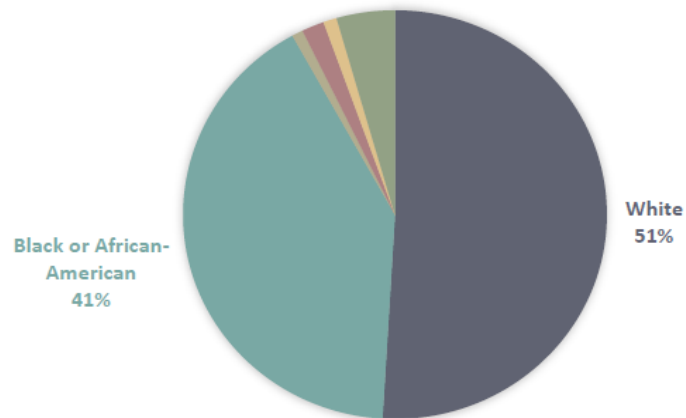
Sleeping Situation	Number	Percentage
Emergency Shelter	272	42%
Unsheltered	255	40%
Transitional Housing	113	18%
Total	640	100%



# 2018 JULY PIT: AT A GLANCE

## BY RACE

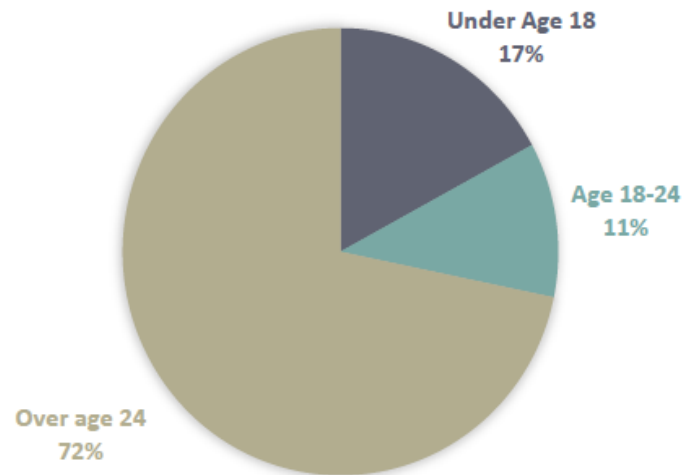
Race	Number	Percentage
White	298	51%
Black or African-American	240	41%
Asian	5	1%
American Indian or Alaska Native	10	2%
Native Hawaiian or Other Pacific Islander	6	1%
Multiple Races	26	4%
Total	585	100%



# 2018 JULY PIT: AT A GLANCE

## BY AGE

Age	Number	Percentage
Under Age 18	107	17%
Age 18-24	70	11%
Over Age 24	449	72%
Total	626	100%



# WHY ARE THEY EXPERIENCING HOMELESSNESS?

---

Backdrop : Lack of Affordable Housing

2018 Renter Wage	Madison
Minimum Wage	\$7.25
Estimated Mean Renter Wage	\$14.87
Rent Affordable at Mean Renter Wage	\$773

2018 Fair Market Rent		
One-Bedroom	Two-Bedroom	Three-Bedroom
\$924	\$1,091	\$1,522

# WHY ARE THEY EXPERIENCING HOMELESSNESS?

---

Backdrop : Lack of Affordable Housing (II)

Year	One-Bedroom	Two-Bedroom	Three Bed-Room
2016	780	936	1294
2017	813	964	1342
2018	924	1091	1522
<b>Increase from 2017</b>	<b>13.65%</b>	<b>13.17%</b>	<b>13.41%</b>

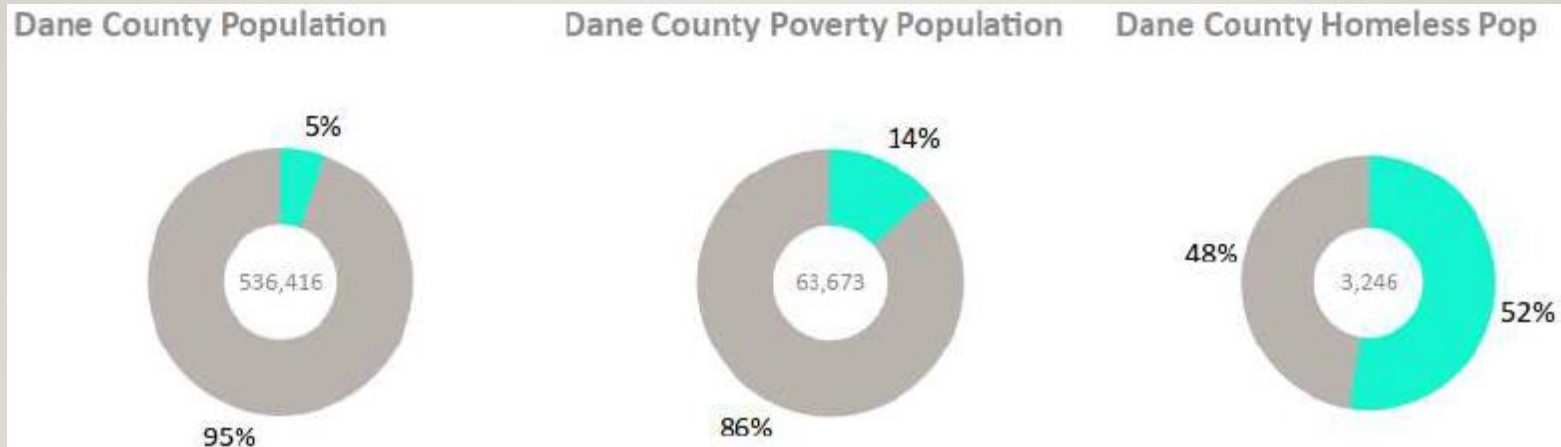


# WHY ARE THEY EXPERIENCING HOMELESSNESS?

---

## Backdrop: Racial Inequity

Black Dane County residents are **23 times** more likely to experience homelessness than white, non-Latinx residents.



# CONTRIBUTING FACTORS:

## 24% INCREASE IN SINGLE HOMELESSNESS

---

- All increase in unsheltered count, 147 to 244
- Out of 244 unsheltered persons, 150 provided homeless length info:
  - 55% (82 persons) met the definition of chronic homelessness
  - 51% (76 persons) were homeless more than a year this time
  - 28% (24 persons) were first time homeless
  - 6 out of 24 first time homeless were homeless less than 3 months
- 4% (6 out of 150 responders) were first time homeless and homeless for less than 3 months

# CONTRIBUTING FACTORS:

## 24% INCREASE IN SINGLE HOMELESSNESS

---

- Out of 244 unsheltered persons, 145 provided disabling condition info:
  - 81% (117 persons) reported one or more disabling condition(s)
  - 48% (70 persons) reported alcohol/substance abuse
  - 71% (103 persons) reported serious mental illness
  - 69% (100 persons) reported other conditions including HIV/AIDS, developmental disability, physical disability, and brain injury

# CONTRIBUTING FACTORS:

## 31% DECREASE IN FAMILY HOMELESSNESS

---

- Tree Lane Apartments (45 unit family PSH) opening in June
- Successful Family Shelter Diversion Program implementation: 70% of new call-ins diverted since January 2018
- Steady increase in Rapid Rehousing program resources
- Strong Rapid Rehousing program outcomes in exit to permanent housing and return to homelessness

# 2019 JANUARY PIT

---



January 23, 2019

- Look out for PIT Planning Committee invitation email!



Sarah Lim, City of Madison CDD

- [slim@cityofmadison.com](mailto:slim@cityofmadison.com)
- (608) 261-9148

