

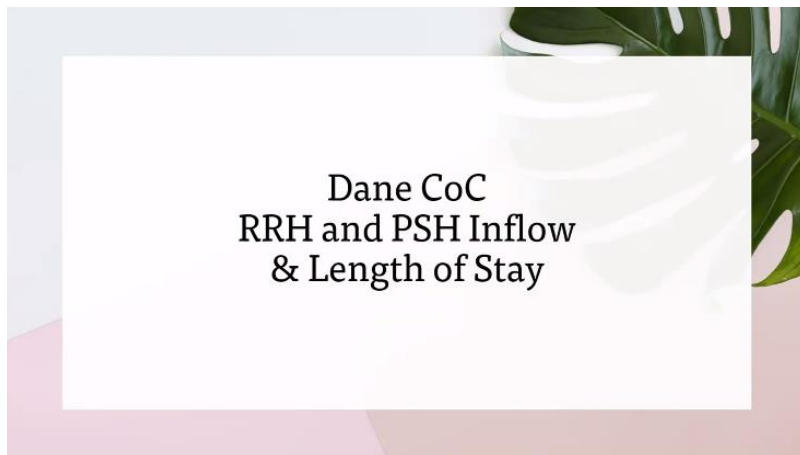
HSC Membership Meeting Minutes

May 20, 2025

Introductions live in person at United Way and in the chat for zoomers!

Description of the [padlet](#), not to replace the emails, this is a pilot and we will see how it goes to compile things all in one place.

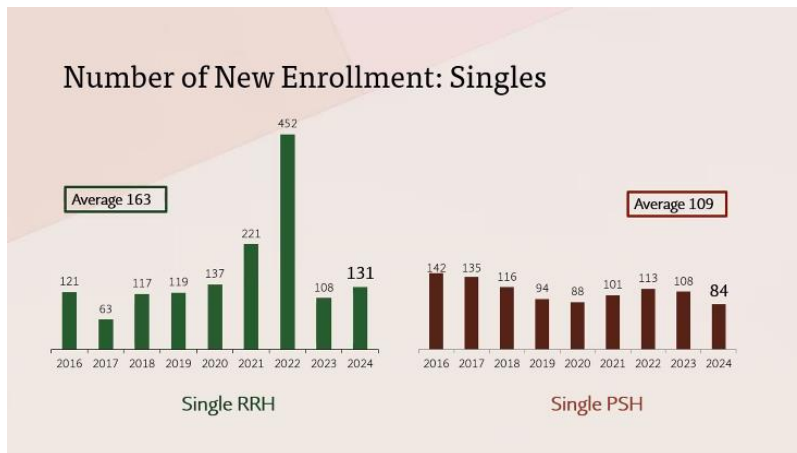
Dane CoC RRH & PSH Inflow & Length of Stay (Sarah Lim, Data Workgroup)



Who is getting enrolled in Rapid Rehousing (RRH) which is time limited and Permanent Supportive Housing (PSH)

Data Workgroup Presentations		
HSC Data Workgroup has been doing short presentations at HSC membership meetings.		
2025 Presentation Schedule		
Q1	Shelter/TH and Outreach	•Inflow, including return to homelessness •Outflow
Q2	RRH/PSH	• Inflow • Length in the program •Outflow
Q3	System Performance Measures & Beyond (other systems, national trend, etc.)	•School •Familiar Faces •National trend, compared with our community data (PIT)
Q4	Prevention, Diversion, Doubled Up Projects	•Inflow, including Z11 •Outflow •Eviction data

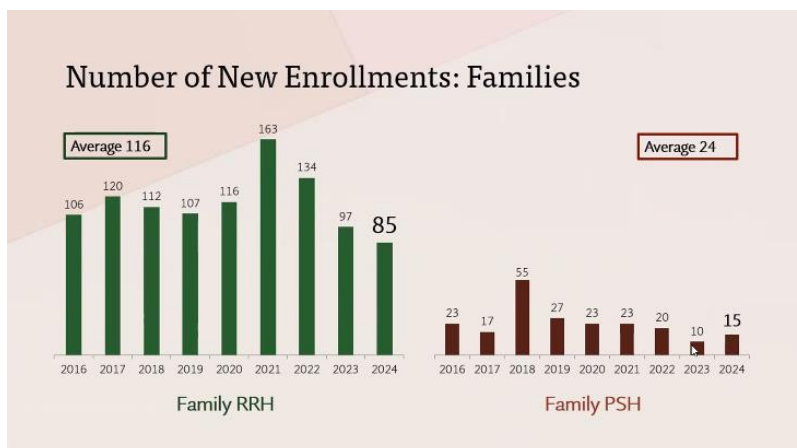
This is the data presentation plan for the year. Highlighted is where we are at.



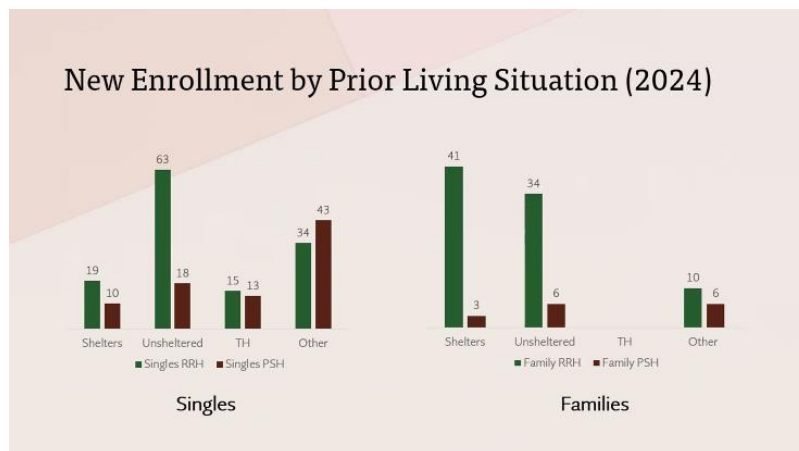
This is how many people are getting enrolled. Singles includes households without children, could be couples, but they are both counted as a single. Average is one year period of time. That is pushed up because in 2022 it was COVID era funding and we had more programs as well as the Hotels to Housing program.

2016 and 2017 is when additional HUD Vash vouchers were obtained as well as when Rethke was opened.

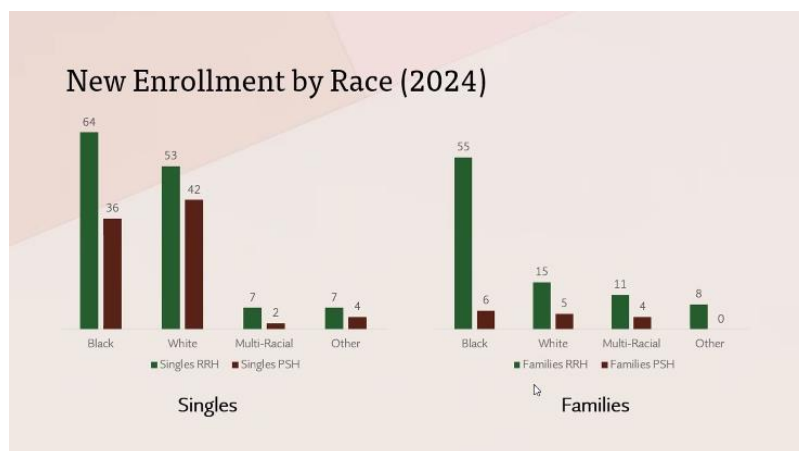
Not all people got housed, this is just the enrollments.



This only includes the head of households, not all the individuals in the family. We have a lot more singles than families in our system overall. In 2018 that is when Tree Lane started. Also some covid era RRH funding was available.



This is before the re-imagine CE numbers. For singles the most came from unsheltered locations. Families had more people in shelters getting into RRH. Other could be transfers, HUD Vash or other programs.



Black people got into housing more, except for Singles PSH. That is consistent with what we noted with the reimagine CE. For singles PSH a lot of people came from unsheltered locations and there are more white than people of color in unsheltered locations.

Length of Stay (2024)

Among Leavers	RRH	PSH
How long did people stay in the program?	376 days (1.03 years) Singles: 325 days Families: 402 days	1,387 days (3.8 years) Singles: 1,351 days Families: 1,468 days
How long did it take for people to find housing on average?	36 days Singles: 39 days Families: 34 days	38 days Singles: 41 days Families: 32 days
What percentage of people exited without finding housing?	17%	7%

This is only for the leavers. Not people still in the program. Singles stay a shorter time than families. RRH is scattered site and they have to find their own housing. 17% of people don't find housing in the RRH program. We could not divide this between singles and families.



Questions?

Length of time to find housing was shorter for families than singles, and that was surprising.

Some discussion about how many children were served in the numbers. We don't have that data now.

These are averages, so there may be some differences for different models.

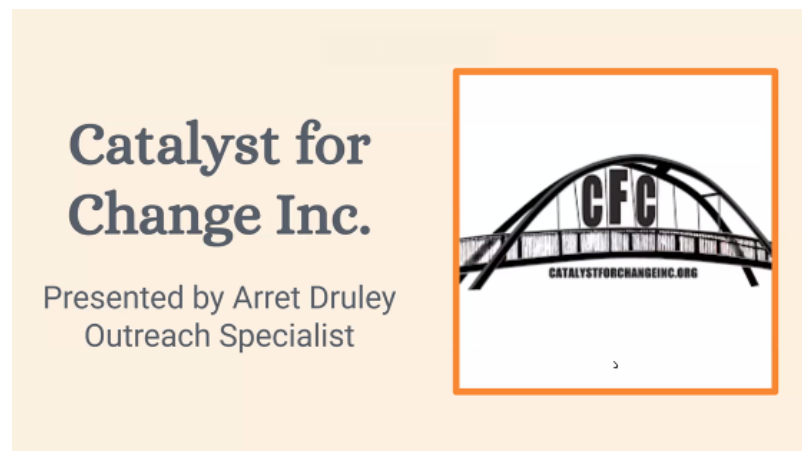
Some PSH units are scattered site and they need to find a landlord, which is why we have a longer time to get into housing.

Do we have enough units? 17% of RRH didn't find housing for singles.

Only 5% of singles get into programs and 17% of families - everyone else has to find housing outside of Coordinated Entry.

[Data on website](#) has been updated. More details of coordinated data are available [monthly](#) and [annually](#).

Catalyst for Change Presentation (Arret Druley, Outreach Specialist)



Arret is going to be CCS and Outreach in the future. Arret is on the data workgroup.



Co-founders are Michael Moody and John Adams and CFC was founded in 2019.

What We Do

- Street Outreach
- Housing Stabilization
- Comprehensive Community Services (CCS)
- Recovery Voucher
- The Together Project



They have 5 programs



Street Outreach

- Cat 1 homeless individuals and families (unsheltered)
- City of Madison contract
- Meeting people where they're at
- Light case management services
- Office hours
- SOS line, partner agencies, self referral

They have a contract with the City, used to have one with the County. They have a little private funding to serve people outside of the city, but at a reduced capacity. They meet people where they are at, and work with people to reach their goals. Shelter, housing or other solutions. They provide light case management, connect to resources. Office hours on E Washington Mon and Wed 9am - 12pm. They take referrals from SOS line, partner agencies, social workers, self referrals. On their website they have their contact info.



Housing individuals includes children, not just heads of households.



Housing Stabilization

- Transition to housing after enrollment in our outreach program
- Introduced to reduce recidivism
- Up to three months after housing
- Goal is to move onto other case management

They don't take referrals for this, it's the people they were working with to get them into housing. They work with people to get them into CCS.

Comprehensive Community Services

- A Dane County CCS agency
- Case management for adults and children mental health
- SF, psychotherapy, ISD, psychoeducation, etc.
- Psychiatrist services to bridge the gap
- Limited availability, more staff anticipated



They have a secondary office on International Lane for CCS. They fill a variety of roles on various teams. They have a psychiatrist on staff, helps with diagnosis and prescriptions. He is well liked by the clients, but they have limited ability to take referrals. They are adding 2 new people in June.

Recovery Voucher

- Supports people exiting treatment for substance use
- 21 clients enrolled as of 2025
- 25 total clients
- One year program with possibility of a second year
- Currently not accepting new clients



Financial aid and case management for people leaving treatment who have achieved sobriety.



Together Project

- Cosigner program for families
- 4 households involved as of 2025, 8 total
- Need a long term case manager referral to John
- Must be pre-approved but need a cosigner
- 1-2 households every 3-4 months

Need good credit, pass the background check and have income, but all they need is a co-signer. They do not take referrals from outreach. Long-term case management is not light case management. Talk to John Adams if you have questions.

What We're Seeing

- More people outside
 - More suspensions from shelter
 - Warmer weather (cyclical)
- More smaller, remote spots of 3-4 people
 - Less traditional encampments
- More Cat 1 families
 - More families without vehicles
 - Less support for doubled up/hotel families
- More community member/parks referrals
 - No significant increase in enforcement
- Increased substance use
 - Methamphetamines
- Increase in garbage/hoarding at campsites
- Increase in pet ownership
- Predicting an increase with new bed limit at shelter



Parks and community referrals are a good sign because its not police enforcement. Smaller campsites are more noticeable from afar due to garbage and hoarding. They have been talking to Porchlight to collaborate with each other.

Questions?

The observations are anecdotal, not necessarily tracking data. Multiple pets are also on the rise. Primary care physicians have been less likely to give an ESA letter, so people can't get into shelter. Psychiatrist at CFC also has issues approving the ESA letters.

Committee Updates, Announcements, & Resource Crowdsourcing

Racial Equity Committee 4th Thursday of the month at noon

- Meets Thursday at noon, Brittany Thompson is the rep to the Board of the HSC. Chara and Maxilliamo are leading the group.

HSC Board of Directors 1st Wednesday of the month, 1-3pm

- HMIS, voted to accepted updates.
- City of Madison will remain lead for EHH funding
- Language review workgroup is looking at forced changes to our language (by-laws, website, etc were all reviewed) and used the list from the New York Times to see if they needed to update documents. Community Plan and Bylaws had the most. They are not changing anything right now but are conferring with the city and are ready to change if they have to

Education & Advocacy Committee 2nd Wednesday of the month, 11am-12pm

- They are looking at their groups not being allowed to lobby. But some groups are discussing the impact of various budget items. They want to have more group advocacy to be more persuasive than one group going at a time. A small workgroup will work on a one-pager to discuss how budget cuts will affect services. Hoping to have multiple groups with the same message.

Lived Experience Council Last Friday of the month, 1-2:30pm

- Met last week, it was brief. Discussed updated website with bios and stories. Another meeting next week.

Nominating & Governance Committee 1st Tuesday of the month, 2:30-4pm

- Currently working on final draft of AI policy use in HSC meetings. Will bring it to the board to approve. Chicago CoC has a policy we are looking at for guidance. Also working on other technology policies in the future. Will be working on committee chair descriptions for committees so people. Will be working on nominations soon.

Shelter Services Committee 1st Wednesday of even months, 9-10:30am

- No report, didn't meet. Next meeting is June 4th.

Doubled-Up Committee 4th Tuesday of the month, 3-4:30 pm

- Talking about decreasing services, were working on a resource list but they are no longer available to people who are doubled up. Working on script and tips for referring people to the right resources and how to deliver tough information. They are working on making sure cases are taken off CCAP when they should be, if its beyond 7 years, it should be removed unless there is a writ or ongoing action. Otherwise they are automatically removed.

Funders Committee 4th Wednesday of the month, 11am-12pm

- Having trouble meeting, they have lots of conflicts. They will be getting a presentation from Sarah Lim on the funding analysis at the next meeting. They are working on the funders collaborative and will debrief on recommendations made.

Community Plan Committee 4th Thursday of the month, 2-3pm

- Met at the end of April. Still a presentation schedule and going through the list each month to do community presentation to get the word out. Helped do a survey about housing and support models. Did a presentation at Core Committee. They have a tracking document to see what has been accomplished. They are working on some other materials for presenting the information from the plan, CSH is working on a one pager and a UW student is also working on some materials.

Core Committee 1st Thursday of the month, 1-2:30pm

- Tellurian update on closing of SROs on Willy Street, not soon, but will happen. Presentation on community plan service models. Will do more research on top requests and recommendations. Request to update scoring on CE priority list for RRH for singles, family adjustment was made previously. Sarah Lim gave presentation on EHH funding to be released soon.

Outreach Committee 1st Monday of the month, 12-1:30pm

Sarah Lim (she/h... to Everyone 1:57 PM

I also have to hop off to another meeting. Here's an update for the HSC Outreach Committee: At our May meeting, 1) we took a deeper dive into data regarding street outreach (number of contacts, Tier 2 invitation and assessment done, exit destination.) 2) We take turn sharing success stories and VA presented this month. 3) We also started discussing what population groups are underserved by street outreach programs and how we can serve them better.

Point in Time Committee (if relevant) Meets in the months leading up to Jan PIT Count

- No meeting

City County Homeless Issues Committee 1st Monday of the month, 5:30pm

- Presentations at last meeting, June meeting will have a public hearing on the budget.

Committee to End Youth Homelessness 3rd Thursday of the month, 11am-12pm

- No update

Youth Action Board Weekly on Sunday at 11am

- No update

Everyone - Community Updates or Opportunities HSC Resource Crowdsourcing [Padlet](#)

Announcements

Heather Corcoran - Dane County Housing Authority - potential 43% cut in budget to their Housing Choice Voucher (Section 8) program.